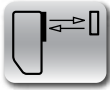




# Small Photo Sensor Diffuse 300mm Sensing

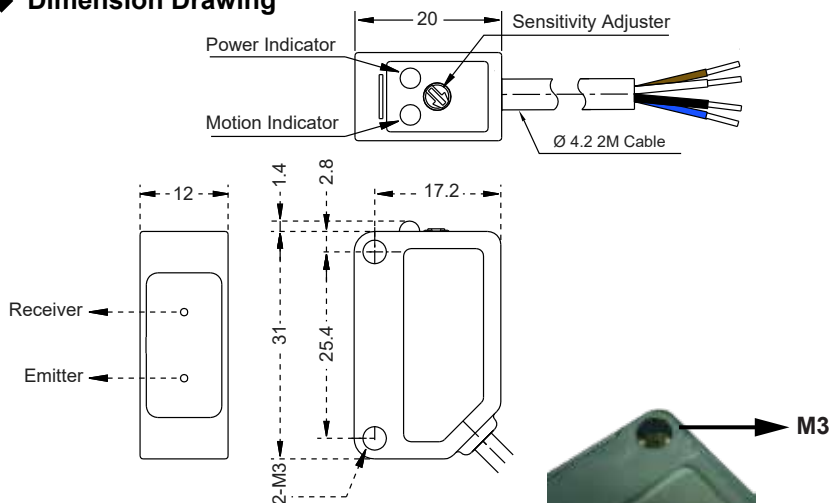
# BY Series

- ◆ Special Non-spherical Optical Lens
- ◆ Visible dual LED makes easy to know the Current Operation Situation
- ◆ Sensitivity Adjuster
- ◆ Light on / Dark on Selectable through Wire



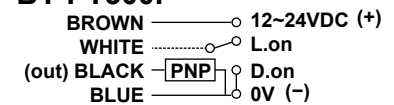
Model	BY-PT300F	BY-NT300F
Sensing Type	Diffuse Reflection	
Sensing Distance	300mm (white paper 300x300mm)	
Emitting Light	Infrared LED 850nm	
Operating Voltage	12~ 24VDC	
Current Consumption	25 mA Max.	
Load Current	100mA Max. at DC24V	
Output Type	PNP(NO) Dark on / PNP(NC) Light on	NPN(NO) Dark on / NPN(NC) Light on
Response Time	1.5 ms Max.	
Insulation Resistance	20MΩ min. (DC500V)	
Voltage with Stand Ability	AC1000V 60Hz for 60 Sec.	
Operating Temperature	-20°C ~ + 60°C	
Ambient Humidity	35% ~ 85% RH	
Protection Degree	IP64	
Material	ABS	
Wiring Method	Pre-wired Ø4.2 x 2 M / 4-wires	
Weight	Approx. 60g	

### ◆ Dimension Drawing

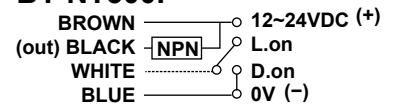


### ◆ Connection Diagram

#### BY-PT300F

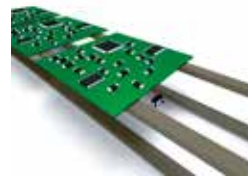
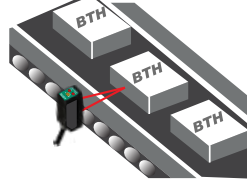
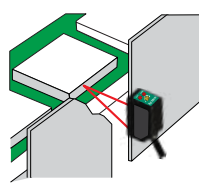
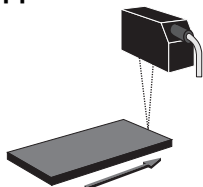


#### BY-NT300F



Please Note White is control wire for output mode  
Light on - with Brown (+)  
Dark on - with Blue (-)

### ◆ Application



The specifications are subject to change without prior notice

All Dimension are in mm

BTH BY-PT300F Version 1.0  
BTH BY-NT300F Version 1.0